

PROTECTION 101

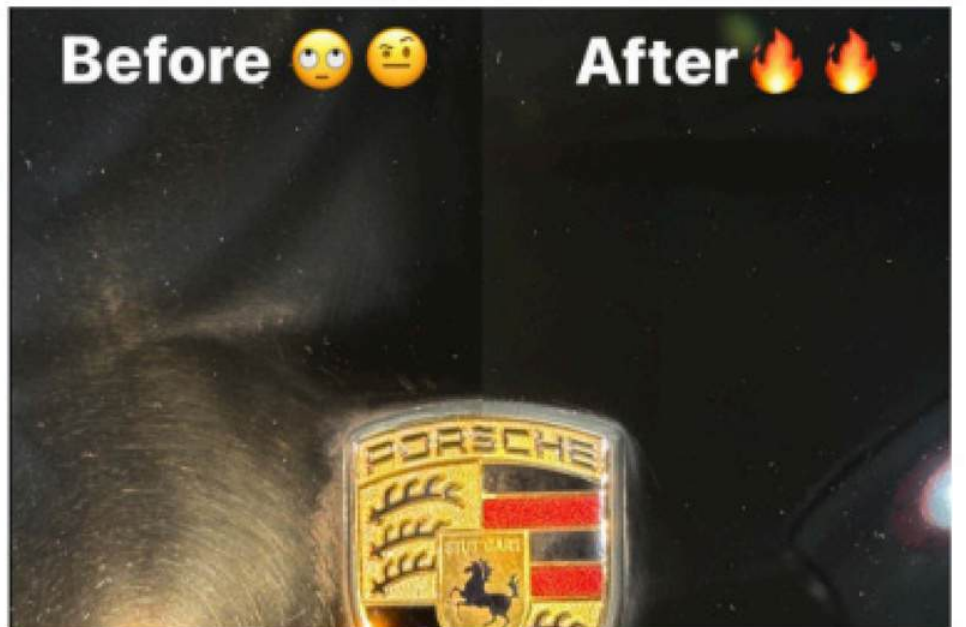
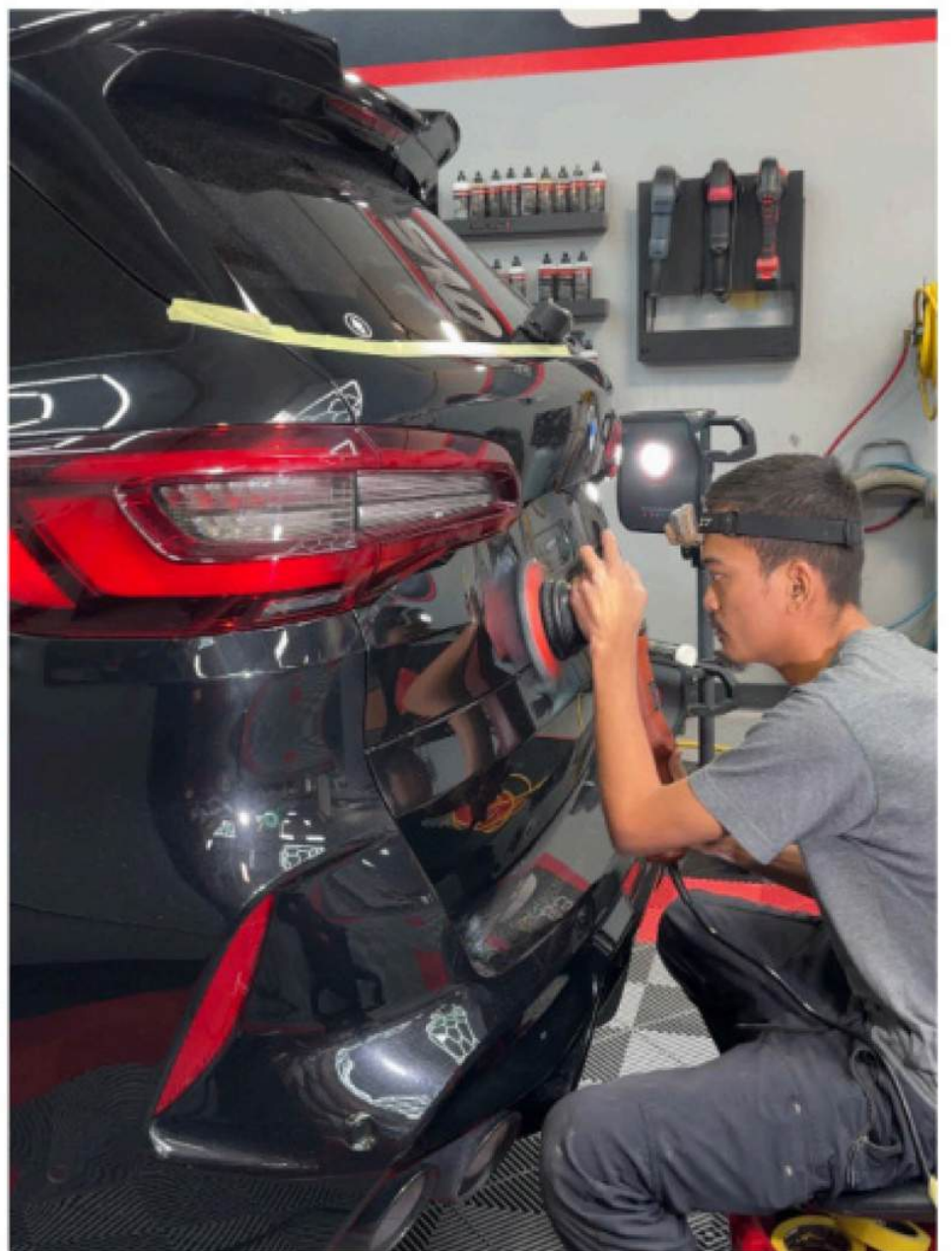
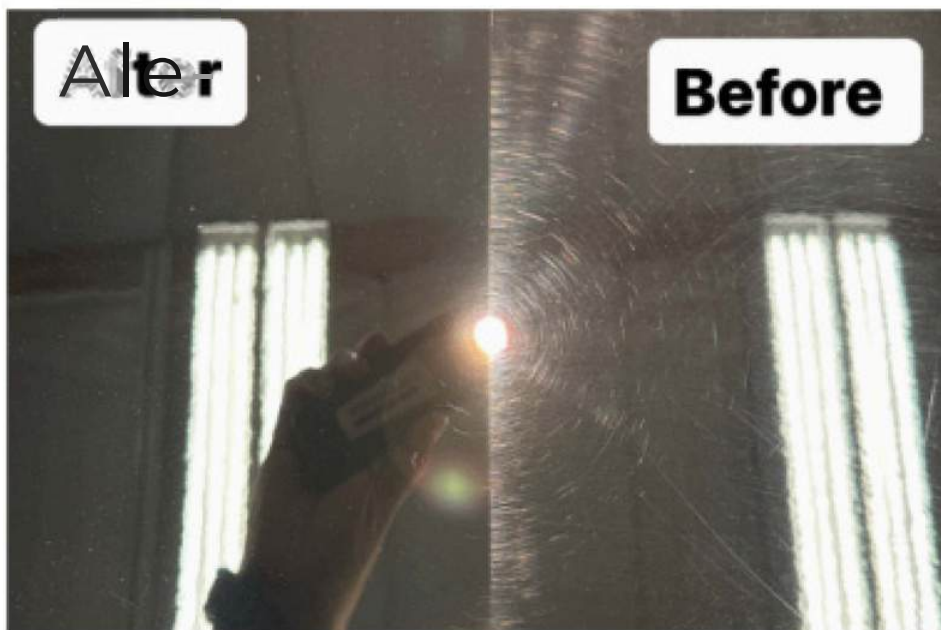
A Quick Guide to Ceramic Coating, Tint, and Paint Protection Film.



Protecting your car's exterior and interior is an investment with ceramic coating, paint protection film (PPF), and the interior Ceramic tint, is not only an investment in maintaining appearance long term, but resale value as well.

This guide covers everything you need to know before starting, from prep work to what to look for when shopping for Vehicle enhancement protection services.





YOUR CAR DESERVES NEXT LEVEL SURFACE CARE & PROTECTION



High
Gloss



Durable



Water
Repellent



UV
Resistant



Stain
Resistant



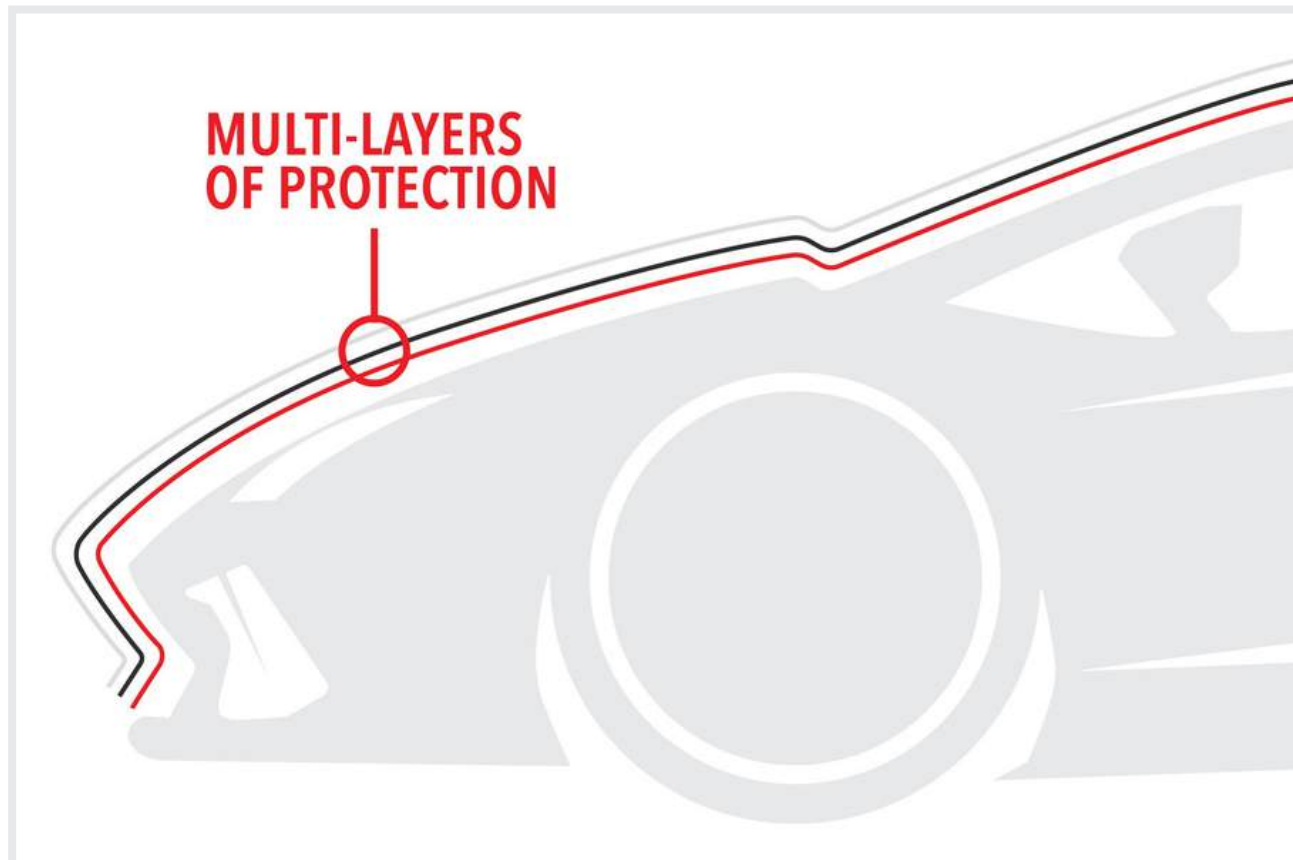
Slick



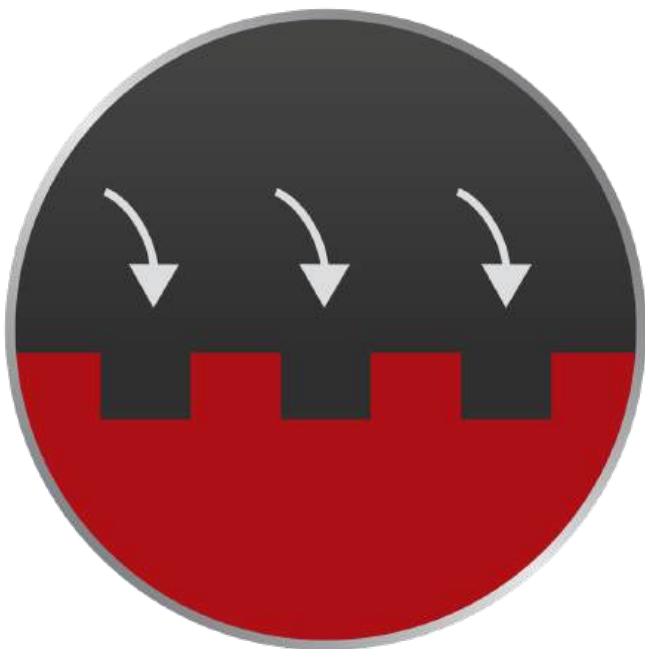
Scratch
Resistant



Chemical
Resistant

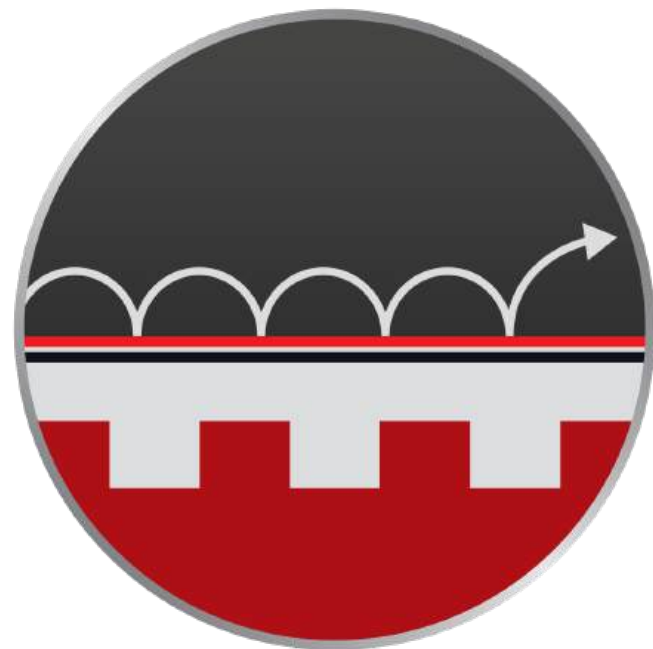


UNCOATED GAPS



When paint is uncoated, debris can sit in pores within the paint.

COATED / NO GAPS



Adding layer of protection prevents debris and pollutants to reach paint.



BENEFITS OF *CERAMIC COATING*

Enhanced protection from dirt, water, Salt
air and chemicals.

Improved Mirror like finish and Killer gloss.

Easier to clean and maintain for years

UV protection from harmful sun rays.

Hydrophobic & Self Cleaning properties

Incredible high gloss retention for years

No waxing & polishing needed

Produces a "GLASS" Like finish Sio2 resin

CLEANING:

Wash your car thoroughly to remove all dirt, grime, and contaminants. Use a pH-neutral car shampoo to avoid damaging the paint.

DECONTAMINATION:

Clay bar treatment and decon wash chemical helps remove embedded road contaminants, fallout and metal particles and smooths the surface for prep polishing before ceramic coating application.

POLISHING / SURFACE PREP:

“ 95 % percent of a great finish is in the prep polishing, the goal is to have the paint finish look like it already ceramic coated before installing layers of ceramic coating ”

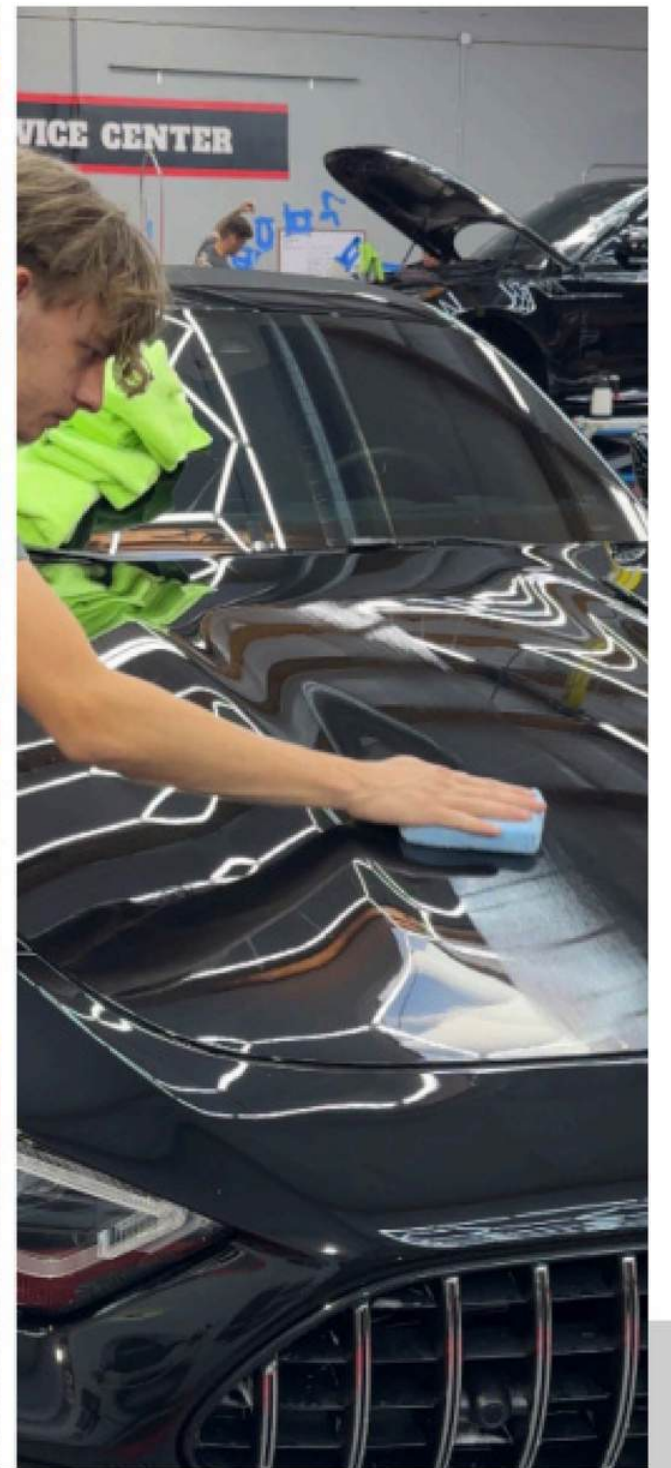
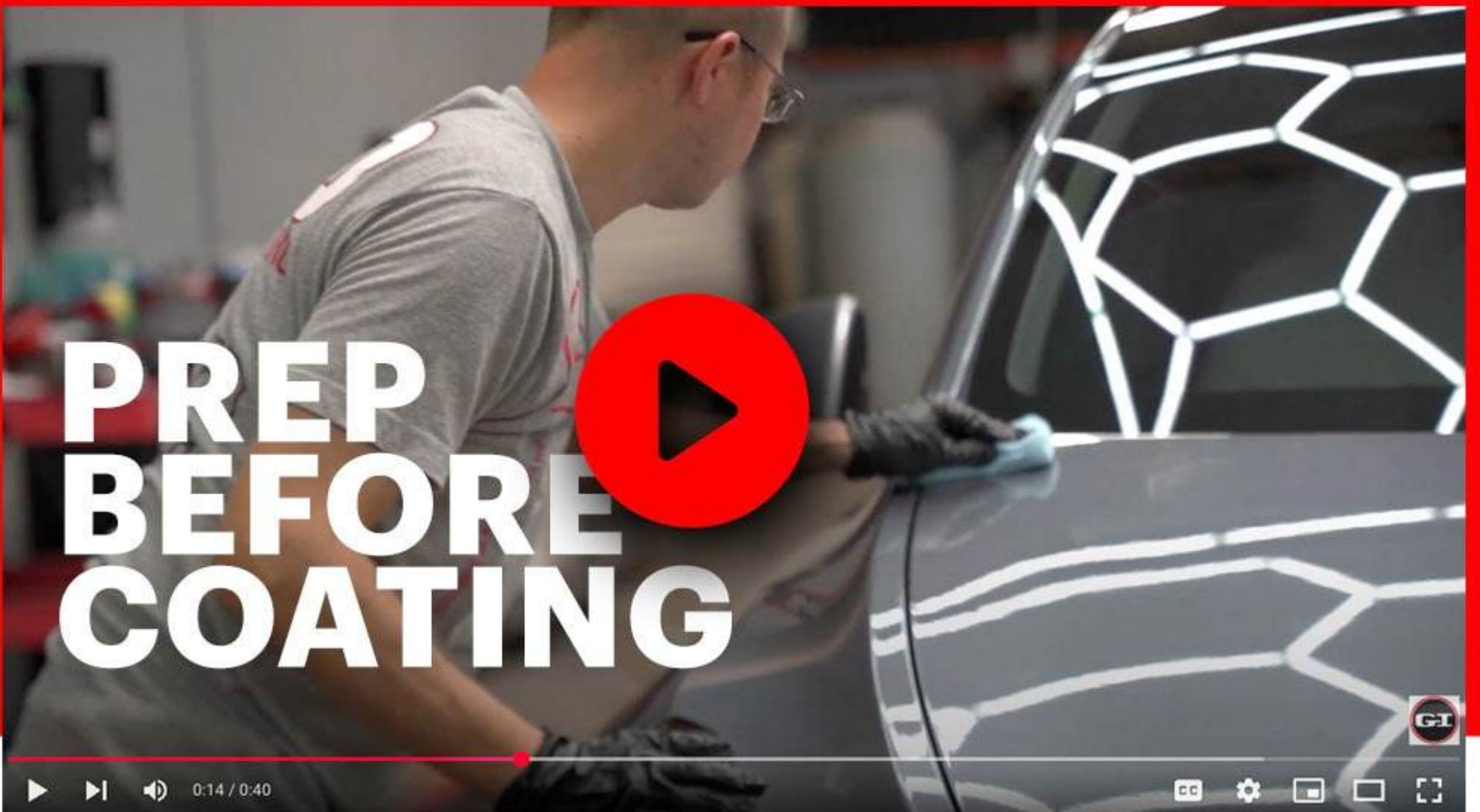
Dual action machine Polish the car to remove any imperfections, scratches ,hard water spots, swirl marks, car wash swirls or oxidation.

This step ensures a smooth surface and paint clarity to optimize finish to maximize the paint finish for the ceramic coating to adhere properly.

SURFACE INSPECTION:

Ensure the surface is dry, free of polishing oils, grease or any residues before applying the ceramic coating. (Inspect finish is "clear" of any paint imperfections)





With the industry's highest solids-per volume formulation, this advanced coating creates an exceptional hydrophobic shield.



APPLICATION

PROCESS:



Apply the ceramic coating in small sections.

Use a microfiber applicator to spread the coating evenly.

allows it to “flash” before leveling the first layer. Give 45 mins t 1 hour before applying 2nd layer

Follow the manufacturer’s instructions regarding application time and curing.

For an unparalleled level of protection and shine, explore the professional grade detailing and protection services offered by GlossIt Detail Studio.



WHAT IS PAINT **PROTECTION FILM** **(PPF)?**

Paint Protection Film (PPF), also known as clear bra, is a thermoplastic urethane film applied to the exterior surfaces of a vehicle to protect its paint from road debris, stone chips, minor abrasions, and other environmental damage. PPF is optically clear, providing near-invisible protection that preserves the vehicle's original paint and finish.

PARTIAL



FULL FRONT



PARTIAL+



FULL COVERAGE





RED MIST C8 PPF GONE WRONG 😞😞 FULL BODY PPF REDO AND CERAMI...

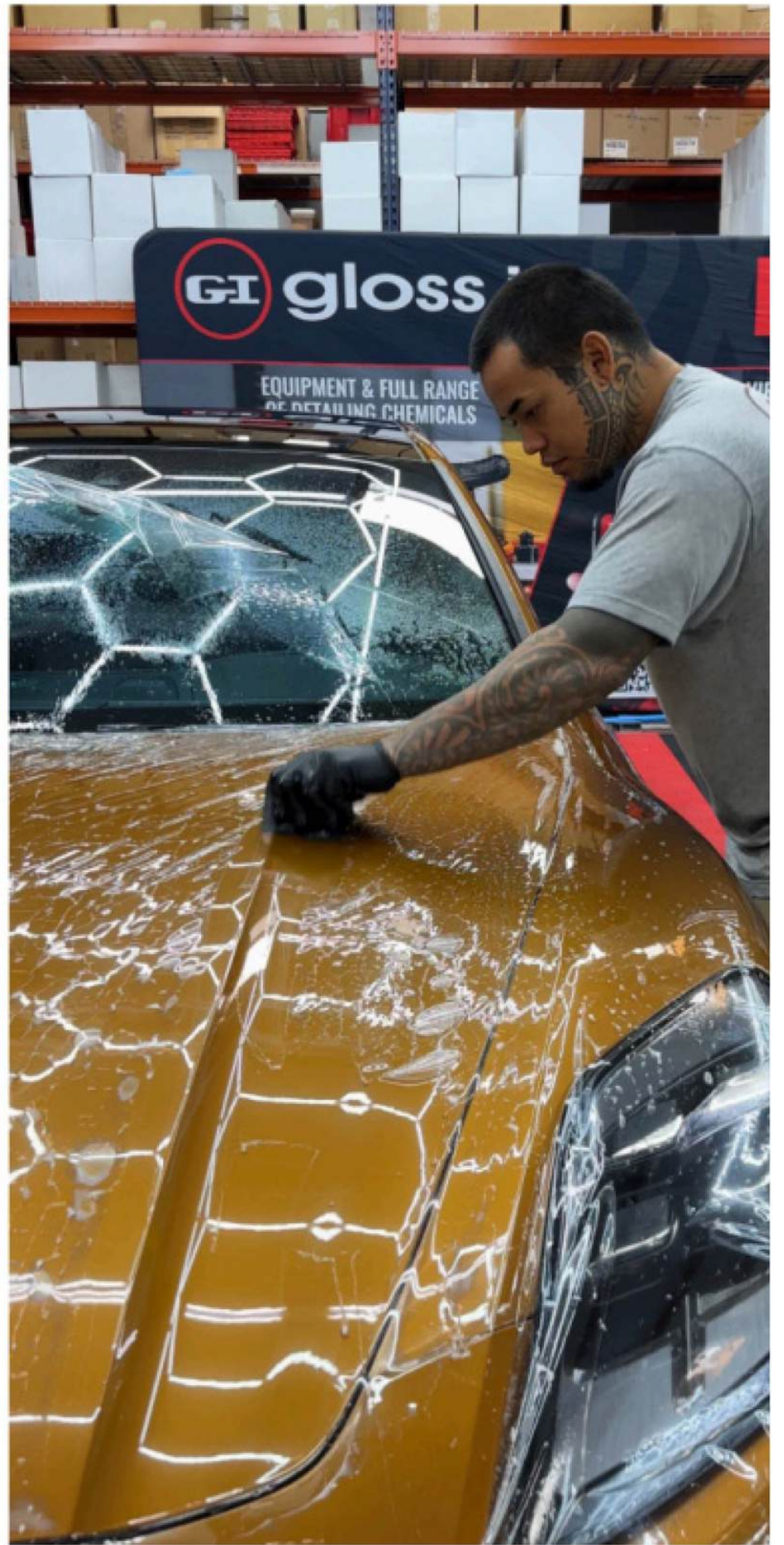


RED MIST C8 GETS FULL PPF PROTECTION & CERAMIC COATING



Watch on YouTube

gloss it



PREPARATION FOR PPF *INSTALLATION:*

THOROUGH WASH

The car must be meticulously cleaned to remove dirt, debris, and any contaminants.

DECONTAMINATION

A clay bar or similar tool is used to eliminate embedded particles that washing alone cannot remove.

SURFACE INSPECTION

Check for any paint imperfections, scratches, or swirl marks that need to be corrected prior to installation.

PAINT CORRECTION (IF NEEDED)

Address any existing paint defects with polishing or correction techniques to ensure a flawless surface.

SURFACE PREPARATION

Wipe down the car with an alcohol-based solution to remove any oils or residues that may interfere with adhesion.

APPLICATION OF PPF:

MEASURING AND CUTTING

The film is pre-cut or custom-cut to fit specific panels of the vehicle, ensuring a precise fit.

WET APPLICATION METHOD

A slip solution (water and soap mixture) is applied to both the car's surface and the PPF, allowing for easy adjustment and alignment.

Gloss-It Detail Studio has been providing the highest quality PPF (Paint Protection Film) paint protection in Las Vegas, NV for more than three decades.

Our Clear Shield rock guard protects the leading edge of your vehicle from damage caused by rocks, gravel, salt or insects through the application of a thin, virtually invisible urethane film.

WHAT IS WINDOW TINTING?



Window tinting involves applying a thin, transparent film to the interior of your car's windows. This film helps to reduce heat, block harmful UV rays, and provide privacy, making your car more comfortable and energy-efficient.

CHECK WINDOW CONDITION

Inspect for chips or cracks, as tinting over damaged glass can lead to improper adhesion or further issues.

MEASURE AND CUT THE FILM

Pre-cut the tinting film to fit the windows precisely.

APPLICATION OF *WINDOW TINT:*

APPLY THE FILM

Use a specialized application solution to wet the glass and film. Then, carefully place the film on the interior of the window.

Use a squeegee to remove any air bubbles or excess solution, ensuring a smooth and uniform finish.

At Gloss It, we ensure that our auto tint includes important components such as color-stable dye and powerful adhesive.

Additionally, we add a ceramic nanoparticle layer for exceptional heat rejection that doubles up on UV protection and also provides an extra layer for top level scratch resistance.

AFTERCARE AND *MAINTENANCE*



To ensure the longevity and effectiveness of your ceramic coating, proper aftercare and maintenance are essential. Here's how to keep your car in top condition:



PPF (PAINT PROTECTION FILM) AFTERCARE

Wash your car regularly, ideally every 1-2 weeks. Use a gentle, pH-balanced car wash soap and a soft the film, as they can lift the edges

Washing microfiber mitt or sponge. Avoid using high-pressure washers on.

Drying. Dry with a clean microfiber towel to avoid water spots.

Avoid Abrasives. Do not use abrasive or aggressive cleaning methods, as they can damage the film.

Inspection. Regularly check for any lifting, bubbles, or damage. Minor reapplying heat with a heat gun or issues can often be addressed by consulting a professional for repairs.

Avoid Harsh Chemicals. Steer clear of solvents or harsh chemicals that could damage the film.

By following these aftercare and maintenance tips, you can keep your ceramic coating, tint, and PPF in top condition, ensuring they continue to protect your vehicle effectively.

PROTECT YOUR CAR WITH CONFIDENCE.

WHAT TO LOOK FOR
**WHEN SHOPPING FOR
THESE SERVICES?**

Finding the right service provider for ceramic coating, tint, and ppf involves more than just comparing prices. To ensure you receive high quality results and a seamless experience, ask the right questions and consider the following factors.

